



# EZORA

COLLECTION



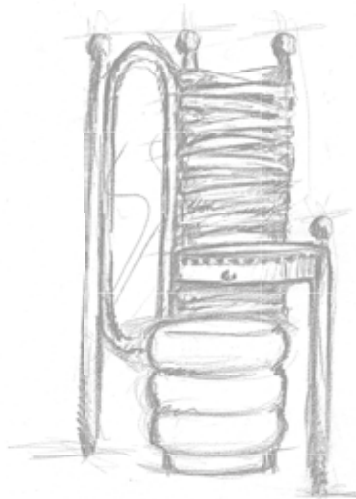


Mesopotamia is the birthplace of humanity's roots. Throughout history, this land has been a crossroads of civilizations, writing a story of beginnings for humanity. As Ndesign, our Ezora Collection, inspired by the enchanting atmosphere of Mesopotamia, tells the story of bringing this ancient heritage into modern living spaces.

The magical city of Mardin, dazzling by day and breathtaking by night, is still considered one of the world's rare open-air museums, with its unique architecture where many different cultures live together in peace and harmony. Each piece of the collection draws inspiration from the timeless legends and rich cultural mosaic of this mystical city.

During the design process, visiting the city to feel its mystical ambiance, strolling through its bazaars, conversing with artisans, and listening to their stories was incredibly inspiring. Mardin's local flavors, scents, and textures deepened our creative journey, enriching the meaning of each piece. These experiences brought life to the intricate details of the collection.

Reflecting the magic of peace, harmony, and coexistence, this collection aims to bring a timeless aesthetic and emotional connection to your living spaces. We hope Ezora becomes a cherished part of your life, adding value and becoming intertwined with your unforgettable memories.



# TAHT

The Serenity of Mesopotamia Beneath the Stars

The Taht Bedroom Collection is inspired by Mardin's tradition of sleeping under the stars on warm summer nights. Rooted in Mesopotamian culture, the "Taht" was a traditional piece of furniture used on terraces during summer months. Over time, it became a symbol of the region's lifestyle and culture. Traditionally crafted with a wooden frame and cotton mattresses wrapped in white fabric, these setups created a striking visual on Mardin's tiered terraces, resembling sails floating above the Mesopotamian plains at dawn.





# TAHT

Drawing from this heritage, the canopy bed in the collection incorporates the cylindrical architectural details of Mardin's monumental structures. Its smooth wooden texture seamlessly blends modernism with tradition, reflecting the warmth and grace of the past. The vanity table with a full-length mirror complements the design with elegant lines, adding functional harmony to your living space.

Every element of the Taht Bedroom Collection unites simplicity in aesthetics with functionality, offering the serenity of the past alongside the comfort of the present.



Designer:  
Hale Betül GÜLEÇ





The Serenity of Mesopotamia Beneath the Stars

On warm summer nights, life thrives on rooftops. The traditional "Taht" furniture, an essential part of Mesopotamian culture, is a centerpiece for terrace and courtyard gatherings under the stars. These communal moments, where families, friends, and neighbors come together, symbolize the region's rich culture and lifestyle.

The Taht Outdoor Collection is designed with inspiration from this tradition. Its aluminum frame is crafted for outdoor durability, while handwoven details bring a touch of elegance, blending traditional comfort with a modern aesthetic. The cushions, featuring patterns inspired by Kufic art, offer a contemporary reinterpretation of timeless motifs. The love seat, with a form reminiscent of the octagon, symbolizes balance, infinity, and continuity, offering both aesthetic appeal and symbolic depth.

This collection revives the traditional lifestyle echoed in Mardin's stone courtyards and terraces, preserving traces of social connections and heritage in every detail. For those wishing to bring this culture indoors, the wooden version of the Taht Collection provides a choice that fuses the elegant texture of tradition with a modern ambiance.

# TAHT



### Serenity and Comfort in the Cycle of Time

Destina draws inspiration from the passionflower motif, symbolizing the cycle of time and the continuous flow of life. Its circular base embraces you with a spacious and comfortable seating area, offering tranquility and relaxation in every moment. The handwoven details add a touch of elegance, making each experience uniquely special. Surrounded by sheer drapes that provide shade, the canopy not only shields you from the sun but also creates a serene sanctuary of pure comfort. Destina is more than just a daybed—it is an experience shaped by the elegance of the past and the continuity of life.

Whether basking in the warmth of the afternoon sun or enjoying the embrace of nature, Destina Daybed serves as an elegant bridge to moments of peaceful indulgence.

## DESTİNA



Designer:  
Hale Betül GÜLEÇ







### A Modern Reflection of Elegance and Abundance

In Mardin, the droplet ("damla") symbolizes abundance, representing the continuity of life and its deep connection to the earth. It is a timeless motif etched into the city's stone streets, resonating through centuries. The Damla Side Table Set is designed to embody this meaningful symbol, crafted from recycled plastic to bring it to life in a sustainable form.

This design captures the reshaped essence of nature and the cycles of the earth while paying homage to Mardin's cultural mosaic. Comprising three pieces, the set preserves the region's cultural heritage, infusing your living spaces with abundance, balance, and elegance.

## DAMLA



Designer:  
Hale Betül GÜLEÇ





# MIRAZ

Serene Outdoor Moments with Mardin's Cultural Heritage

In the stone streets of Mardin, the elegant details of doors and windows hold stories whispered across centuries. Each window, like a hidden portal to inner worlds, symbolizes unseen realms, while each door heralds new beginnings, rebirths, and infinite possibilities.

The Miraz Collection takes shape from the refined details of Mardin's doors and windows. The harmony of geometric forms, the symmetrical arrangement of octagonal shapes, and the quest for continuous connection reflect the profound aesthetic and tranquility of the city's stone structures with a modern touch.

The Coffee Table, Side Table, and Dining Table are designed with materials suited for outdoor use, making them an essential part of your open-air moments. This collection offers an elegant fusion of Mardin's cultural heritage and modernity, adding depth and grace to your living spaces.





# MARZEN

A Journey from Mardin's Doors to Your Tables

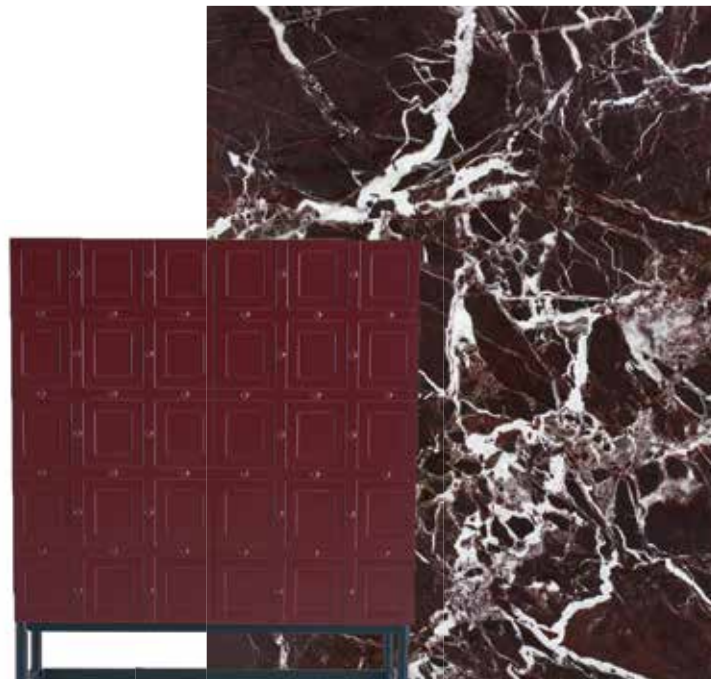
Mardin is a city filled with deep history, unparalleled elegance, and intertwined traces of life at every corner. Every door, every window, and every detail holds a story. These doors are not merely transitions but symbols of a city's identity, history, and the passage of time. The mystery of Mardin's doors lies in their diverse forms, intricate details, and unique stories. Each door, with its variety of geometries and rich textures, carries both functional and aesthetic significance. These forms reflect Mardin's diversity, its culture of coexistence, and the unique worlds within its homes.



Designer:  
Eda Töyer

# MARZEN

The Marzen Collection draws inspiration from the mystery of these doors and the essence of the city. The slim window grilles and geometric details seen in Mardin's narrow streets inspire the form of the collection's metal legs, while the pomegranate seeds, symbols of vineyards and abundance, influence its striking color palette. These tones reflect the deep connection to the land and evoke Mardin's history and rich culture in every piece. The Marzen Collection brings the tranquility created by light streaming through an old doorframe into modern living spaces, seamlessly blending heritage with contemporary design.





# YİVLİM

The Elegance of the Past Merged with the Comfort of Today

The Yivlim Sofa draws inspiration from the echoes of history etched in Mardin's stone walls and the refined craftsmanship of master artisans. The ribbed surfaces harmonize the depth and aesthetics of Mardin's unique architecture with a modern design.

The upholstery details pay homage to the enduring elegance of the region's stonework, expressed through a contemporary touch. Its cushioned seating, a modern reinterpretation of traditional divans, invites you to experience the tranquility of the past and the comfort of the present.

The fringes extending along the base reflect Mardin's traditional textile artistry in a modern form, adding movement and elegance to the sofa. By combining the timeless grace of history with the comfort of today, the Yivlim Sofa brings timeless sophistication and aesthetic depth to your living spaces.



Designer:  
Eda TÖYER





### Peaceful Elegance on the Wings of Hope

The serene flutter of doves' wings amidst the gentle breeze rising from Mardin's stone streets comes to life in the design of the Hevin Armchair. Derived from local languages, the name "Hevin," meaning hope, symbolizes this tranquility and elegance. With its cozy and enveloping seating, the Hevin Armchair brings the doves' message of hope and peace, echoing through the skies of Mesopotamia, into your home. Its comfort makes it an essential part of moments filled with serenity and calm.

## HEVIN



Designer:  
Hale Betül GÜLEÇ





# TELKARI

Elegance Rooted in Tradition, Brought to Life in Modern Design

Inspired by the ancient art of Telkari, where masterful hands transform fine metal wires into intricate patterns, the Telkari Console reimagines this timeless craft with a modern perspective. The console's handles feature elegant designs inspired by the chain-like "zencerek" motif, symbolizing peace and unity through interconnected lines. Each curve carries a profound meaning, embodying timeless harmony and connection. Crafted from 100% natural wood, the console's octagonal legs represent balance and continuity. The infinite cycle of the octagon reflects the flow of time and the perpetual rhythm of life. This form imbues the design with both aesthetic and symbolic strength, creating unity and harmony in every detail.



## The Elegance of Coexistence

Deep in time and in the enduring streets of Mardin, the graceful arches of doors and columns held the essence of unity and peace. This collection is inspired by the unifying strength of the zencerek motif, symbolizing the harmony of togetherness.

Each piece in the collection carries the whispers of the past and the tranquility etched into Mardin's stonework, bringing them into your living spaces. Crafted from 100% solid wood, items like the bookshelf, dining table, and coffee table combine the warmth of solid wood with the enduring strength of marble, bridging the past and present.

In this collection, the nobility of marble and the natural texture of wood come together, creating harmony in every detail. The Ahenk Collection is a celebration of peace, balance, and the magic of coexistence, offering an experience that brings timeless elegance and serenity into your home.

# AHENK



Designer:  
Hale Betül GÜLEÇ







## HELKA & LINKA

A Symbol of Elegance and Unity

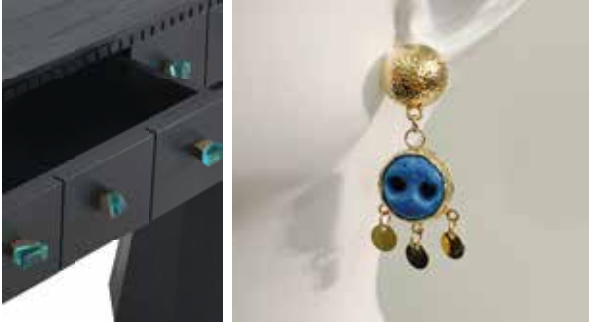
The Helka Side Table Set is inspired by the brilliance of the sun. Its sun-shaped legs, made entirely of 100% natural wood, bring energy and vitality to the space, while its elegant marble tops offer the perfect blend of simplicity and grace. "Helka" means "elegant" and "beautiful" in local languages, reflecting this elegance in every detail of the design, creating a sense of harmony. The two-piece design symbolizes the concepts of harmony and unity, adding aesthetic depth to your living spaces.

The Linka C Table, on the other hand, enhances your living space with its minimalist and elegant design, providing a functional touch.



Designer:  
Hale Betül GÜLEÇ





## The Protective Power of Mardin, Illuminated by Turquoise

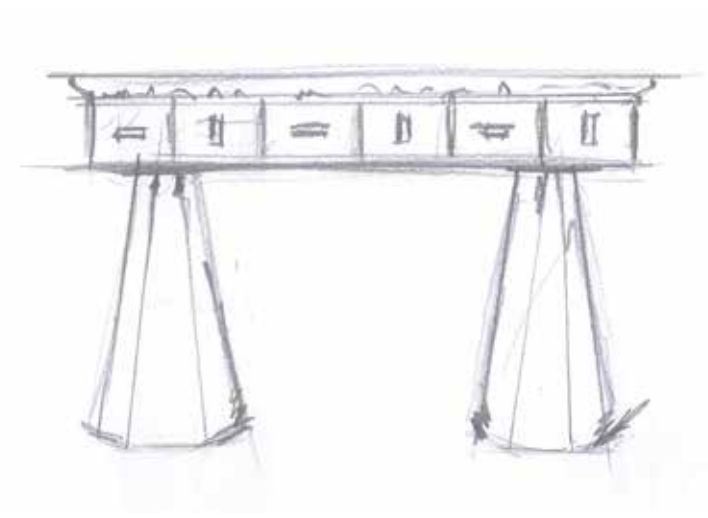
The Firuze Console Table, adorned with turquoise stone handles, pays homage to Mardin's tradition of protective talismans. The turquoise stones symbolize the region's protective forces, embodying the elegance and assurance of the past in every detail. The intricate craftsmanship of the handles reflects a modern interpretation of the patterns carved into Mardin's stones.

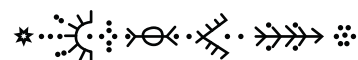
Its legs, elegantly tapered in an octagonal form, enhance the design's uniqueness and visual appeal. Each transition in its structure adds character, making it both distinctive and captivating. The Firuze Console Table infuses timeless elegance and cultural richness into your living spaces.

# FIRUZE



Designer:  
Halit ÇELİKOĞULLARI





# ARTUK

The Silent Melody of Mardin

Imagine walking through the cool shadows of narrow streets... Stories echoing in the memory of stone for centuries meet the whisper of the wind. Mardin's graceful silhouette, with its serene walls and the delicate lines of minarets reaching skyward, envelops the soul. The Artuk Armchair is a reflection of this tranquil spirit.

The prominent vertical lines of its wooden frame evoke the slender forms of historic minarets, while its warm texture carries the witness of centuries. Designed to bring the enchanting aesthetics of Mardin into modern living spaces, Artuk is a delicate fusion of past and future.

This armchair is more than a place to sit—it is an invitation to lean into history and feel the profound melody of the city.



Designer:  
Eda TÖYER



# SHEMSA

The Radiance of the Sun Shining Over Mardin's Layered Architecture

The Shemsa Side Table Set takes its name, meaning "sun," from the light that meets the stone-paved streets and tiered staircases of Mardin. Inspired by the region's history, where the sun symbolizes enlightenment and divine light, this set reflects the glow resonating from Mardin's stone alleys and ascending steps. Comprising two pieces—one crafted from stone and the other from 100% natural solid wood—the Shemsa Side Table Set brings the tranquility of sunlight reflected on Mardin's stones into your home, adding warmth and elegance to your living space.



Designer:  
Hale Betül GÜLEÇ







# DARA

## Layers of Time

Dara, one of the ancient world's most significant cities, tells the story of history's layers and humanity's connection to nature. With its mesmerizing ruins, rich cultural mosaic, intricate water channels, and the mystical atmosphere of its tomb chambers, Dara carries a timeless narrative. This design is born as a contemporary interpretation of the flowing time that still echoes in Dara's depths.

Much like the ruins of Dara, its modular and adaptable structure reflects the multi-layered and transformative essence of the ancient city. The organic and modular design recalls the seamless union of stone blocks and the weathered, amorphous forms of stones shaped by time. This piece adapts to the dynamic needs of modern life



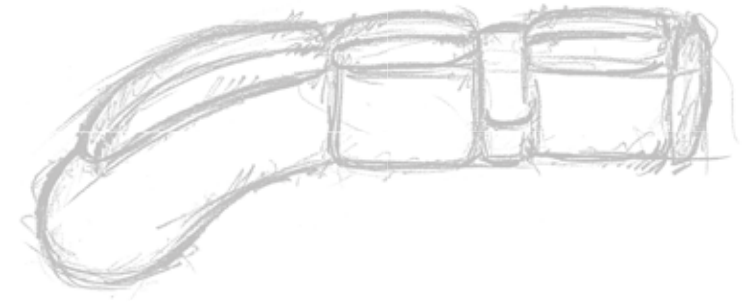
# MARDE

The Strength of Stone, A Modern Interpretation of Comfort

Marde, a name rising through the layers of time in the heart of Mesopotamia, is synonymous with resilience, durability, and cultural depth. Inspired by this timeless legacy, the Marde Armchair brings a powerful and comfortable reflection of cultural heritage into modern homes. Just like the ancient city it is named after, the chair embodies both strength and elegance. Its minimalist form becomes a focal point in any space, while the craftsmanship hidden in its details offers a luxurious experience. The refined, textured fabrics add visual and tactile warmth, making it more than just a seating area—it becomes a foundational element that completes the spirit of a home with durability and timeless beauty.



Designer:  
Halit ÇELİKOĞULLARI





# BADEM

The Sweet Union of Abundance and Elegance

The Badem collection, inspired by Mardin's almond candies, symbolizes abundance and the fertility of the earth with a refined touch. The almond shape reflects the region's natural grace and connection to the land, while the woven texture of the table harmonizes perfectly with Mardin's stone craftsmanship and rich cultural heritage.

The rounded contours of the almond form seamlessly blend elegance and aesthetics in every detail. The sturdy, robust legs of the table convey structural strength, adding a balanced aesthetic and a reassuring presence to the design.



Designer:  
Halit ÇELİKOĞULLARI



### A Reflection of Timeless Elegance

The Nisibis Sofa is shaped by a design language inspired by the massive divans, the ancestors of modern sofas and armchairs. Drawing from the refined armrest and backrest motifs of traditional divans, it reinterprets Mesopotamia's rich cultural heritage in a contemporary form.

Its structure, inspired by the concept of a shell frame and inner filling, combines durability with aesthetics. The embossed stitching enriched with waterway motifs symbolizes how the Euphrates and Tigris rivers, the lifelines of Mesopotamia, have shaped life in this region.

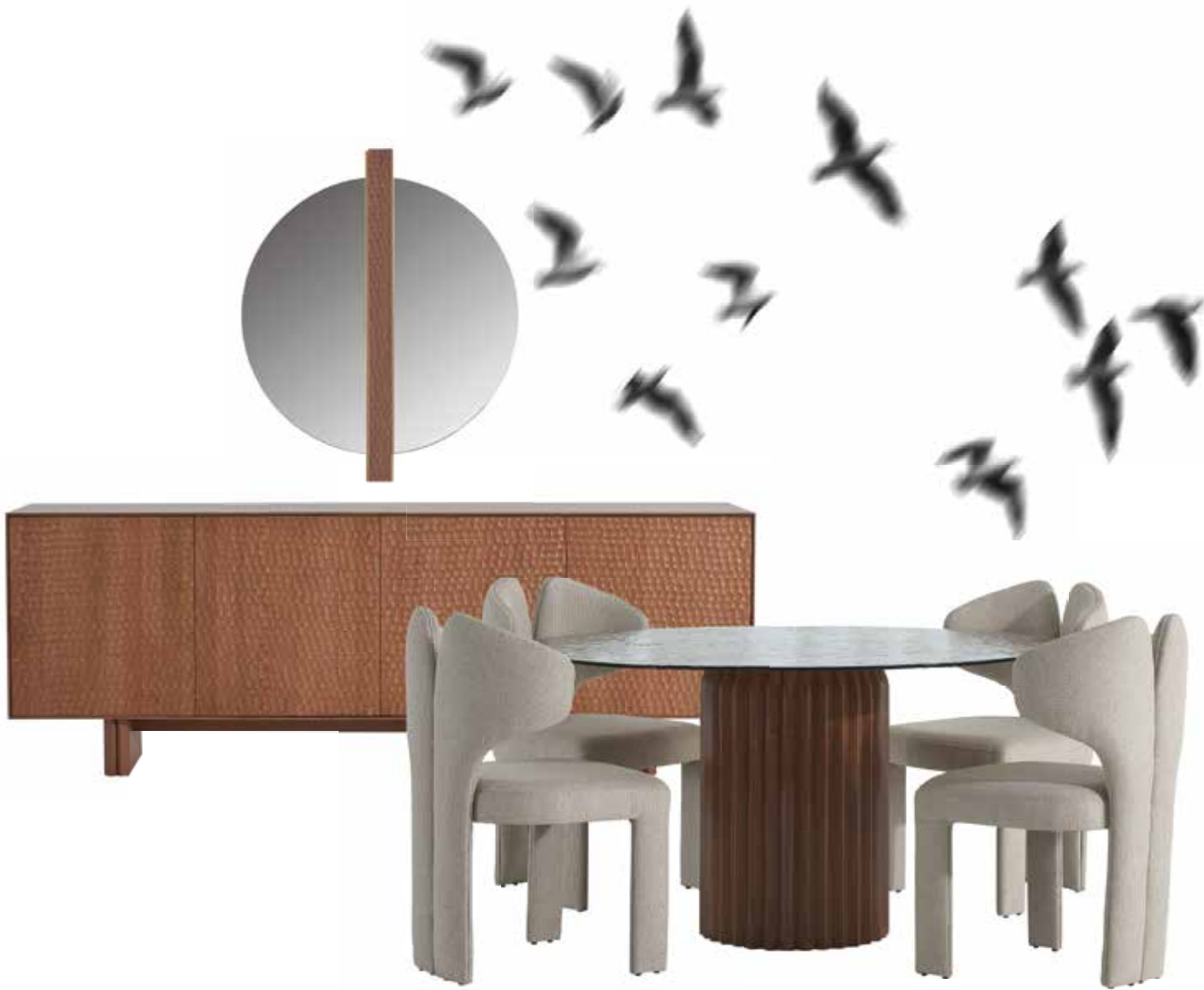
This delicate detail brings the fertility and interconnectedness provided by these rivers throughout history into your living spaces, offering a touch of heritage and harmony.

## NİSİBİS



Designer:  
Ümran AYDIN





A Fusion of Timeless Traces of Mardin

The Kamari Collection is designed with inspiration drawn from the architectural elegance of Mardin. The ribbed dome-shaped leg structure forms the focal point of the design. The veneer craftsmanship on the elliptical dining table and coffee table surfaces comes to life with marquetry details symbolizing the Mesopotamian Sun.

# KAMARİ



Designer:  
Ümran AYDIN



# KAMARI

Kamari chairs, offering an abstract interpretation of the doves gliding around Mardin's ribbed domes and minarets, align gracefully around the table, enhancing the collection's sense of harmony and completeness. The fusion glass surfaces of the collection and the fine details on the solid oak wood used in the console doors embody a modern take on traditional copper craftsmans\_hip. This delicate touch elegantly bridges the past and present, merging heritage with contemporary design.





# KUFI

The Echo of Peace in Timeless Elegance

The Kufi script is a traditional art form where the Arabic alphabet takes on sharp edges and geometric forms, embodying aesthetic beauty. Frequently seen in Mardin's architecture, this art creates visual harmony through its elegance and simplicity.

Inspired by this refined art, the Kufi screen features the inscription "Selamun Aleyküm" on its surface, bringing the themes of peace and unity to life. In Arabic, this phrase represents a universal call for tranquility, embodying the profound meanings of peace and tolerance.

The screen's square form is shaped by a modernized interpretation of the waterway motif. Each corner symbolizes the flow of time and history, while the calm motion of water reflects the cycle of life. This motif signifies renewal and constant transformation with every passing moment.

With its geometric form, the Kufi screen introduces a spiritual depth to your living spaces, aiming to bring tranquility and serenity into your home.



Designer:  
Ayşenur Nari





# SHILYA

The Spirit of the Past, the Comfort of the Future

Mardin's mystical silhouette, with its graceful minarets reaching skyward, has forged a unique bond between history and aesthetics for centuries. Inspired by the enchanting architecture of this magical city, Shilya combines modern comfort with sophisticated design through its elegant wooden legs and refined upholstery details.

Named after a local word meaning "place of rest," Shilya brings Mardin's tranquility and serene atmosphere into living spaces. It is not just a physical seating area but also a haven where the soul finds peace.

Shilya serves as an elegant bridge connecting the spirit of the past to the promise of the future, embodying timeless sophistication and comfort.





### The Melody of Chains

Erbane is an instrument that carries the rhythm and spirit of Mesopotamia, transcending time. Inspired by this instrument, which tells the story of the land's melodies and the freedom of souls dancing to them, the Erbane table collection creates a mystical ambiance in any space. The root veneer on the tabletop symbolizes the vast, fertile plains of Mesopotamia and the life that blossomed from this land. The collection's side table, equipped with a speaker and integrated lighting, introduces a unique design that meets the needs of modern life. The Erbane collection is more than just a functional object—it acts as a bridge, bringing the soul of the past into today's spaces. Like the melodies resonating through Erbane's chains, it invites anyone who touches it to listen to the stories echoing from the depths of Mesopotamia.

## ERBANE



Designer:  
Halit ÇELİKOĞULLARI





#### Layered Comfort Inspired by Mardin's Architecture

The design of the Mardivan Sofa is built upon a structure reminiscent of Mardin's tiered houses. The city's architectural layout is unique, with its terraced plans symbolizing tolerance and respect by not obstructing one another's views.

The armrests, backrests, and seating units come together in layers, creating a flowing aesthetic with their organic contours while presenting a contemporary look. Its modular design offers a cozy, elegant, and customizable experience for the user.

The solid wood base legs add a touch of natural charm to the design, while the elevated structure aligns with modern needs, blending practicality with style.

# MARDIVAN





# TIDU

A Bridge from Past to Future

Taking its name from Mardin's ancient Akkadian-era designation, Tidu is designed with inspiration from the city's unique architecture and the gentle curves of the Euphrates and Tigris rivers. The table's right-angled arch-shaped legs echo the iconic architectural structures, arcades, and majestic passages of Mardin. The travertine tabletop, reminiscent of Mardin's katori stone, integrates the rugged yet elegant stone textures of the past into modern life. The special finish on the solid oak veneer reflects the earthy tones of Mesopotamia, infusing each piece with the warmth of nature.



The console, vertical cabinet, and TV unit in the Tidu Collection reinterpret the architectural elements of Mardin's streets in a modern way. Curved forms and open spaces blend aesthetic and functionality, carrying the cultural and architectural essence of the city into living spaces.

Every detail of the collection reveals original touches and a fluidity of form, standing out with its elegant and functional design approach. Tidu serves as a bridge connecting the past to the future, skillfully harmonizing Mardin's profound cultural heritage with today's modern aesthetic.

## TIDU



Designer:  
Ümran AYDIN





ndesignmobilya



ndesignmobilya



Ndesign Mobilya



Ndesignmobilya



[www.ndesign.com.tr](http://www.ndesign.com.tr)